



## Business Benefits

### Operational Agility

Conceive and implement new business processes rapidly. Removing limitations on the ready use of spatial data in business decisions.

### Managed Dissemination

Map based information and managed processes can be easily shared between project teams, business stakeholders, contractors or alliance partners in real time reliably.

### Embrace diversity in GIS

Broad range of layer file and service Gateways enables data from most modern GIS to be integrated natively into projects.

### Enable choice in GIS

Because GeoSamba is an integration tool you are free to choose the GIS which suites each application best.

### RDBMS Integration

Integrate tables from any modern database based application securely, even over the internet.

### Leverage Web Services

Enables layers from private, public and commercial web mapping services to be

## Available Editions

### Workgroup

Perfectly priced and featured tool for project teams map collaboration

### Classic

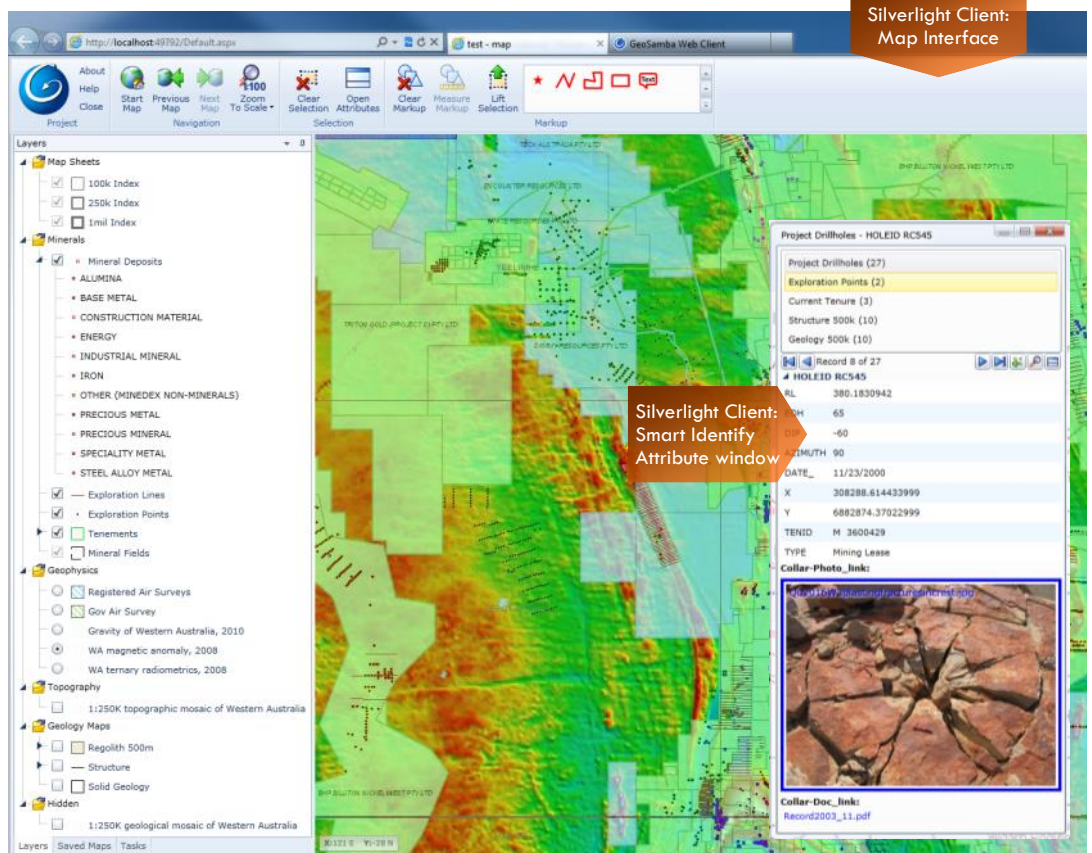
The best value enterprise Web GIS solution on the market

### Enterprise

Including unlimited on-site deployments — ideal for larger enterprises

GeoSamba a rapid mapping and information integration framework for the enterprise delivered through your browser.

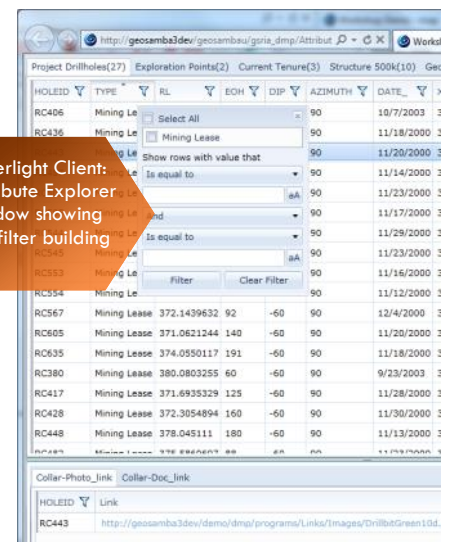
An advanced scalable architecture and flexible licensing models make GeoSamba the ideal tool to share information on maps to project teams, departments and across large enterprises.



Silverlight Client: Smart Identify Attribute window

## Version 3 introduces a new innovative Silverlight Web Client, featuring:

- ◆ Full support in most browsers including Internet Explorer, Firefox, Chrome and Safari
- ◆ Tile cached map background for fast navigation
- ◆ Multi-purposed mouse controls enabling identify, scroll or marquee zoom in/out, pan and selection without leaving the map
- ◆ Easy to use Ribbon Bar for tools and buttons
- ◆ Pinnable dynamic panels for: Layers, Saved Maps and Tasks
- ◆ All new Attribute Explorer data grid window



Silverlight Client: Attribute Explorer window showing the filter building tool

Brought to you by



# DATA SHEET



## GeoSamba Data Sources

### GeoSamba IMS

Enables support for local network layer data sources:

- ESRI Shapefile vector files <sup>3</sup>
- MapInfo TAB vector files
- ECW image files
- JPEG2000 image files
- TIFF image files
- Point database tables with X,Y fields <sup>3,4</sup>
- Database tables which extend feature attributes <sup>5</sup>

### Bing web service layers <sup>1</sup>:

- Roads base map
- Hill-shade base map
- Aerial base map
- Hybrid base map

### ArcGIS Server Map Service:

- Feature Class layers
- Drawing elements
- Image layers

### ArcIMS Image Service:

- Feature layers
- Image layers

### ArcIMS ArcMap Service:

- Feature Class layers

### OGC web services

- WMS layers <sup>2</sup>
- WFS / WFS-T <sup>3</sup> layers <sup>2</sup>

### Database Gateway

Enables support for local network tabular data sources <sup>6</sup> which support an OLE DB connection.

GeoSamba is a powerful browser based mapping tool which is designed to deliver in key areas important to your business:

- ◆ Interoperable project configuration
- ◆ Powerful Web GIS interface and tools
- ◆ Easily extended interface functions

Architected as a collection of modular server components GeoSamba can be deployed flexibly to meet the needs of your organisation. This modularity, together with flexible licensing, provides a simple means to scale solutions and deliver value. All GeoSamba components meet modern network security standards and can be connected through internal or external networks.

### Gateways

Some of GeoSamba's server components act as connectors to sources of data. These components are known as "Gateways". There are six different types of Gateways currently provided:

Each Gateway type is designed to allow a GeoSamba Application Server component to interact with a different data source type. Current Gateways Types include:

- ◆ *Microsoft Bing Maps*  
Bing map background services
- ◆ *ESRI ArcGIS Server*  
Configured ArcGIS Server Map Service
- ◆ *ESRI ArcIMS Server*

- ◆ *OGC—Web Services*
- ◆ *GeoSamba IMS—local file Gateway*
- ◆ *Database*

Multiple Gateways, of the same or different types, can be connected to or be consumed by a GeoSamba Application server. Gateways can be positioned anywhere and are designed to transform data sources into secure web services.

Each provides a standard GeoSamba Gateway web service to it's respective configured source. In addition each Gateway both optimises and logs all activity.

Some Gateways are simple and pass through rendering instructions to their source. Others are more complex and incorporate a map rendering capability themselves. Gateways with rendering capability are provided with an administration interface to configure layers and symbology.

### Application Server

The GeoSamba Application Server is the central component, it's features include:

- ◆ Connection to GeoSamba Map Gateways to access map layers
- ◆ Manages users through roles (capability can be delegated to MS Active Directory)
- ◆ Create Projects for users
- ◆ Connect to Database Gateways and link records to map layer features

<sup>1</sup> Some licensing may conditions apply.

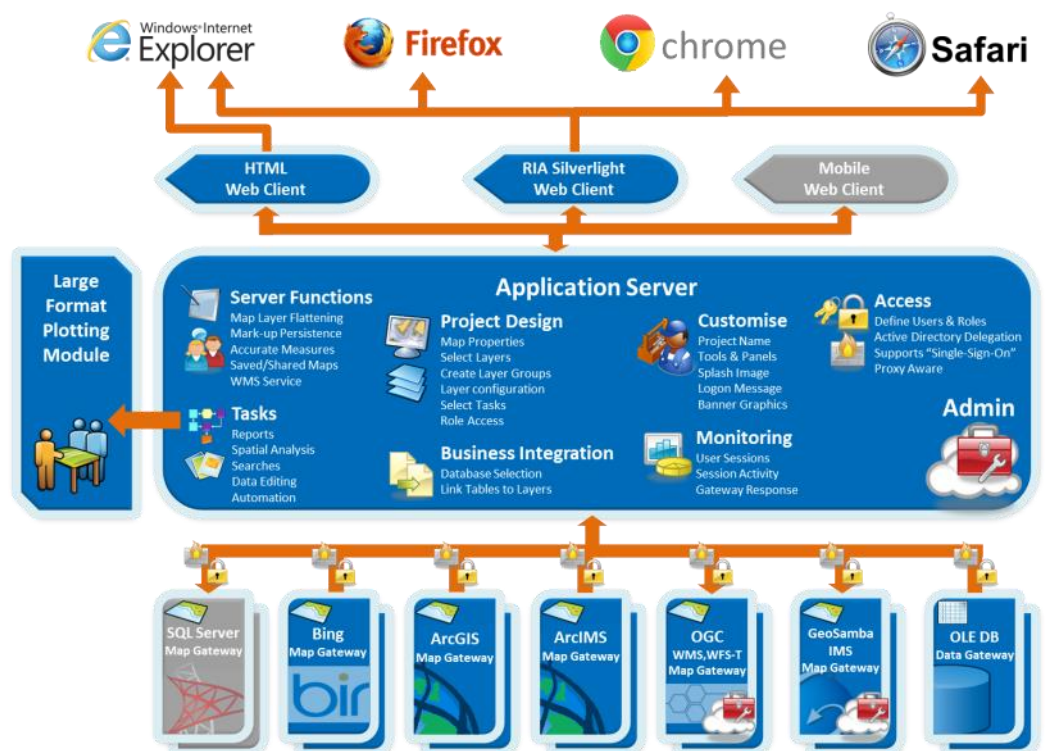
<sup>2</sup> Supports selected implementations, including: Oracle application server, ArcGIS Server, GeoServer & MapServer.

<sup>3</sup> Supports transactional vector edit functions

<sup>4</sup> Supporting most databases via OLEB, including: Oracle, MS Access

<sup>5</sup> Supports one-to-one relationships only

<sup>6</sup> Supports up to many-to-many relationships



# DATA SHEET

## Task Operators

These operators are configured into a series of steps that run for end-users within a Task Wizard when clicked to start, like any other button.

### Branching

- > Numeric comparison
- > String comparison

### Conversion

- > From Map Units
- > To Map Units

### Display

- > Message
- > Attribute Explorer
- > Attribute Explorer plus links

### Editing

- > Add new feature
- > Change feature attributes
- > Change feature geometry
- > Delete features
- > Get fields from layer
- > Prompt attributes edit

### External System

- > Link to external custom web services

### Geocode

- > Zoom to address

### Geoprocessing

- > Buffer geometries
- > Download extracted files
- > Extract image of layer
- > Extract features to file
- > Subtract geometries
- > Symmetric difference
- > Union geometries
- > Intersect geometries
- > Normalize Geometry

### Legend

- > Clear active layers
- > Hide a layer
- > Hide all layers
- > Refresh legend
- > Set layer active
- > Show a layer
- > Show all layers

### Map

- > Delete View
- > Load View
- > Refresh map
- > Save map as image
- > Save View
- > Set active tool in client
- > Set the map scale

### Markup

- > Clear markup
- > Load from geometry
- > Prompt user for new style
- > Save markup

### Parameter

- > Prompt for parameter
- > Prompt for report parameter
- > Set value for parameter

### Querying

- > Count features
- > Get geometry type

### Report

- > Generate simple print report
- > Generate for selected features
- > Generate single report

### Search

- > Perform a search
- > Prompt for search parameters

### Selection

- > Add features to selection
- > Clear selected features
- > Save selection attributes
- > Save selection geometries
- > Zoom to selection extent

- ◆ Create attribute or linked data Searches
- ◆ Create and manage Tasks
- ◆ Configure proxy servers for web services
- ◆ Create and manage customisations for user interfaces
- ◆ Define lookup tables on attribute or linked table fields for searching or editing Tasks
- ◆ Manage saved map Views
- ◆ Configure server settings such as file clean-up and support email address
- ◆ View active sessions, user activity and Gateway performance logs

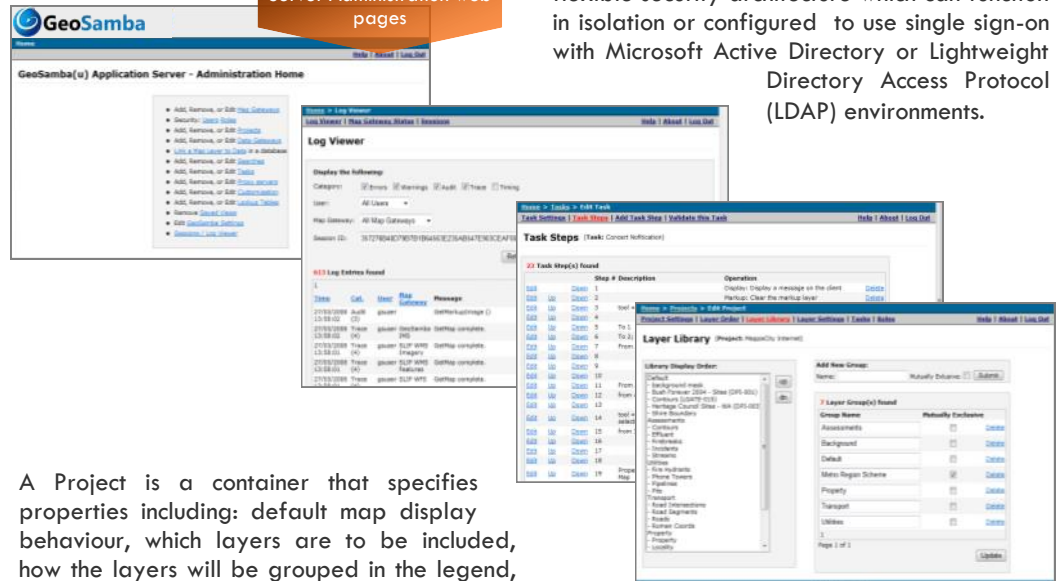
attributes, edit data or automate business processes. Tasks can also be further extended by integrating your own external code.

When combined with the ability GeoSamba users have to precisely manage selection sets Tasks represent a truly powerful feature, enabling more effective analysis and visualisation.

GeoSamba monitors user activity at both an Application Server and Gateway level. Sessions, users, projects and Gateway responses are all tracked for each activity. Enabling administrators to monitor user activity as it occurs or generate historic reports on user or Gateway activity.

GeoSamba offers a comprehensive and flexible security architecture which can function in isolation or configured to use single sign-on with Microsoft Active Directory or Lightweight Directory Access Protocol (LDAP) environments.

Sample of the Application Server Administration web pages



A Project is a container that specifies properties including: default map display behaviour, which layers are to be included, how the layers will be grouped in the legend, the default behaviour of layers, which Tasks are to be available and what roles can access a project. Projects can be easily cloned and modified, creating a highly productive environment.

The Application Server manages access to projects through stateful user sessions performing core functions, such as: passing layer rendering instructions to data sources, flattening map images from Gateways, managing selection sets for vector layers, persisting markup geometries, running tasks and calculating precise map measurements.

GeoSamba Tasks enable reusable custom tools and processes to be modelled and rapidly deployed into projects. Tasks can be simple or complex as needed and are constructed by configuring the 50+ available Operators in different combinations.

Operators are pre-configured into Steps of Tasks by administrators and extend the base tools of the GeoSamba interface to generate reports, perform spatial analysis, search

Properly configured with Secure Socket Layers (SSL) on a hardened platform, GeoSamba security complies with rigorous commercial security needs.

In addition all GeoSamba components are proxy aware and can be configured to operate through your business proxy server strategy.

## Large Format Plotting (LFP) Module

The LFP Module enables the creation of PDF plot files up to A0 size with resolutions of up to 300dpi. This module enables "on demand" hardcopy map production service throughout the enterprise. LFP incorporate a suite of new hardcopy map options such as grids, titles and a smart "limited" legend.

LFP is included for all Enterprise licenses and as an optional addition to Classic and Workgroup Licenses.



# DATA SHEET

## HTML Client

### Toolbar

- Zoom to Start View button
- Refresh Map button
- Zoom In by marquee tool
- Zoom Out by marquee tool
- Zoom To Scale button
- Pan / Re-center map tool
- Zoom to Previous Extent button
- Show/Hide Overview Map button
- Identify Features tool

### Selection

- Select Features by marquee tool
- Add to Selection by marquee tool
- Remove Selection by marquee tool
- Add to Selection by Circle tool
- Clear Selection button
- Display Feature Attributes button
- Perform an Ad-hoc Query button
- Open Feature Hyperlinks tool

### Markup

- Markup Map with Annotation tool
- Markup Map with Points tool
- Markup Map with Lines tool
- Markup Map with Polygons tool
- Convert Features to Markup button
- Clear Markup button
- Measure Distances & Areas tool
- Print Map button

### Panels

- Task List
- Manage Markup Styles
- Manage Views
- Layer Legend/Library/Order

## RIA Silverlight Client

### Main Ribbon

### Navigation

- Zoom to Start Extents button
- Zoom To Scale button
- Zoom to Previous Extent button
- Zoom to Next Extent button
- Clear Selection button

### Sel.

- Open Attribute Explorer button
- Clear Markup button
- Convert Features to Markup button
- Draw Point Markup tool
- Draw Line Markup tool
- Draw Polygon Markup tool
- Draw Annotation Markup tool
- Measure Distances & Areas tool

### Markup

- Tasks (custom configured functions)
- Saved Maps (Private or Shared)
- Layers (visible, query, label, info)
- Legend (repositionable)

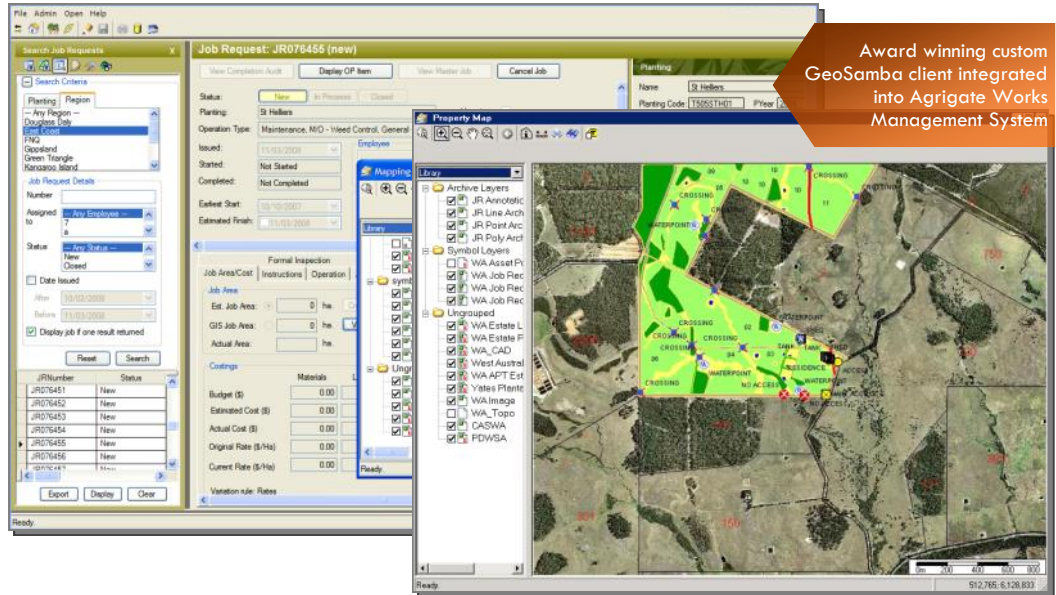
### Default Map Tool

### Navigation

- Mouse Wheel Zoom In & Out
- Ctrl+left\_marquee: Zoom In
- Ctrl+right\_marquee: Zoom Out
- Dbf left mouse: Zoom In
- Dbf right mouse: Zoom Out
- Left mouse drag: Pan
- Right mouse click: Recentre

### Selection

- Left mouse: Identify Features
- Shft+left\_marquee: Add to Selection
- Shft+right\_marquee: Remove Selected



Award winning custom GeoSamba client integrated into Agrigate Works Management System

## Client Interfaces

GeoSamba provides a rich web service application API for easy integration into other enterprise applications and development of custom client solutions.

GeoSamba now also provides 2 freely deployable ready for use web browser client systems:

- ◆ The HTML Browser Client is an ultra-thin interface not requiring any plug-in's
- ◆ The new Rich Internet Application (RIA) Browser Client build in Microsoft Silverlight

The new RIA Silverlight Client represents a substantial rethink of browser delivered GIS user interfaces. The highly innovative interface

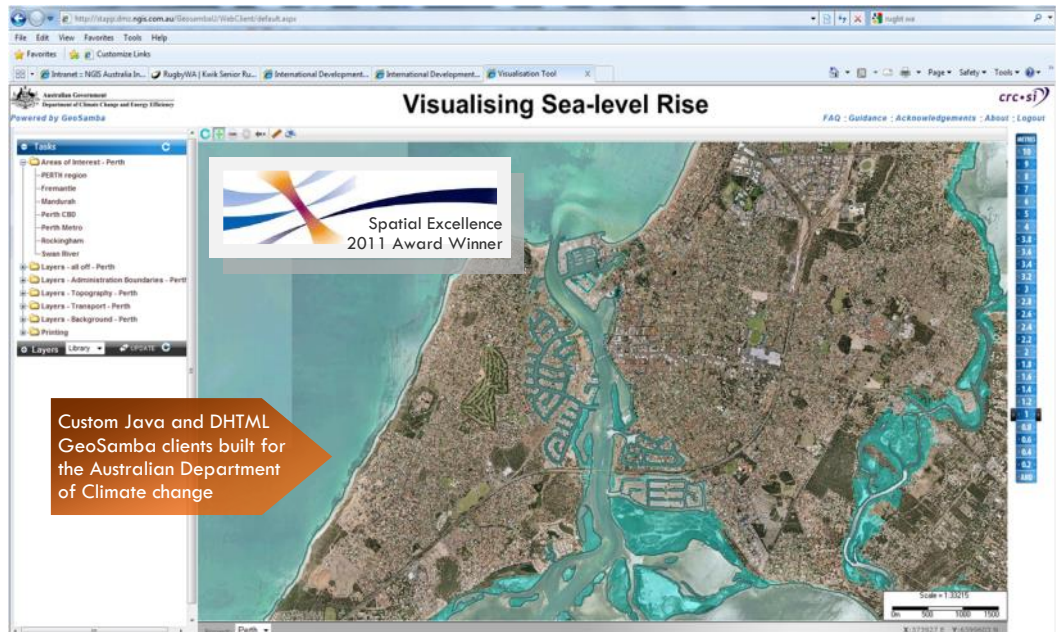
provides users with the look, feel and usability of a powerful desktop application, yet is fully compatible with all the widely used browsers.

Through careful design the Silverlight Client successfully delivers powerful new capabilities and ease of use.

Some examples of the innovations in the Silverlight Client include:

- ◆ Tiled background transition maps enrich the user experience by providing an always visible navigable map that can be created for any Project regardless of data sources or coordinate system
- ◆ A Default Tool mode which makes rich map navigation and selection capabilities available instantly at the users map cursor

<http://www.geosamba.com/>



Custom Java and DHTML GeoSamba clients built for the Australian Department of Climate change



Distributed in Oceania by  
 ISPATIAL SOLUTIONS  
 INNOVATIVE SPATIAL SOLUTIONS  
[www.ispatial.com.au](http://www.ispatial.com.au)

Distributed in Europe & the Middle East by  
 GEOSOLVE IT  
 Geographic Information Systems  
[www.geosolveit.co.uk](http://www.geosolveit.co.uk)

Distributed in Asia by  
 ngis  
 people partnership success  
[www.ngis.co.hk](http://www.ngis.co.hk)